

WALTHER PILOT



Automatic Spray Guns

Save Material – Protect the Environment



The Coatings Expert

Fulfill the highest quality requirements

“Automatic spray guns play a key role as the final components of a complete system. For that reason, their quality requirements need to be as high as possible.”

Wilhelm W. Schmidts
Managing Director



Key components for your success. The WALTHER PILOT 8-point programme:



Company headquarters and spray gun production are located in Wuppertal, Germany.

- ❶ Our state-of-the-art precision machines guarantee unsurpassed process reliability and quality standards. We are continuously working on improvements: endurance and performance tests in which the spray guns are opened and closed millions of times are constantly being carried out.
- ❷ Our products save material and protect the environment at the same time. Whenever required, tests are carried out at our own technical centre to determine the best atomisation technology for the particular spraying process.
- ❸ We offer a 10-year guarantee on the availability of all replacement parts.
- ❹ We offer a wide variety of models in order to cover as many applications as possible. We can also determine a tailor-made product solution specifically for your requirements, with the aim of cutting costs by reducing energy and material consumption. In all of our solutions, you will benefit from our many years of experience in a large number of industrial sectors.
- ❺ WALTHER PILOT is the ideal partner for all questions on technology, material supply, control features, overspray filtration, etc. On request, we can provide you with a complete system that meets the highest demands with regard to process reliability, durability and a long service life.
- ❻ We also provide products for market niches and offer a wide range of special solutions, e.g. for delicate and difficult spraying jobs or for coating areas that are difficult to access. You can benefit from this expertise for your special requirements.
- ❼ We can reveal potentials for cutting costs. We will be happy to advise you.
- ❽ We are your reliable partner. We offer convincing after-sales service. Please do not hesitate to contact us.

Solutions from a complete system supplier



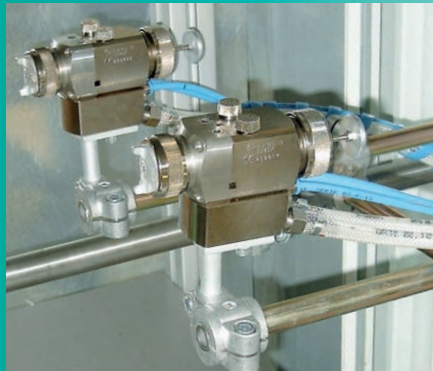
Pressure tanks and agitators in various sizes and models



Pumps for material transfer from buckets, drums and containers.



Pneumatic or electro-pneumatic control units for controlling automatic spray guns



Large variety of model versions for many applications



Energy saving spray booths and housings for optimising the process



Conveyors and drying systems

Walther Pilot is responsible for all aspects of spraying, including:

- Spray guns for manual or automatic operation
- Material supply using pressure tanks or pumps
- Control of the spraying process using pneumatic or electronic control units
- Mountings, mounting plates, etc. for lifting devices, robots, stationary fittings
- Transporting parts to the spraying facility
- Overspray filtration systems or special housings for automatic spray guns
- Drying systems



- Reduce costs
- Protect the environment
- Assure quality

We put particular emphasis on an application system that saves material and protects the environment. That's why many spray guns are available as medium pressure, HVLPPPlus or HVLP models. Further savings can be achieved by an exact adjustment of the spray jet on the workpiece contour. Thermal energy can generally be saved by using the appropriate spray booths.

Much more than just painting

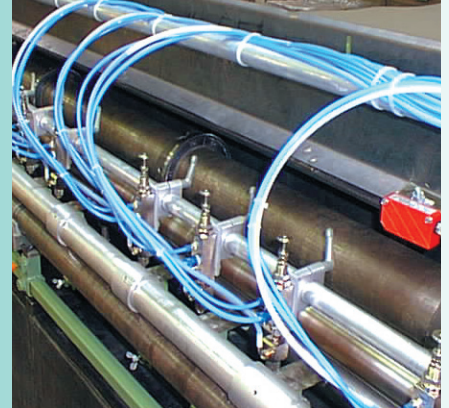
A wide range of applications



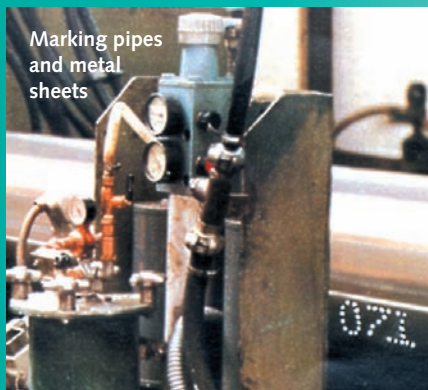
Robot application of anti-corrosion coating



Lubricant application



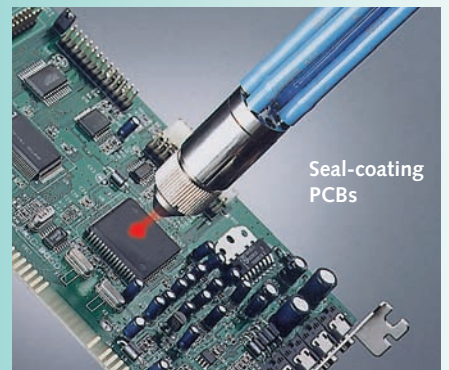
Marking seams for the production of car seats



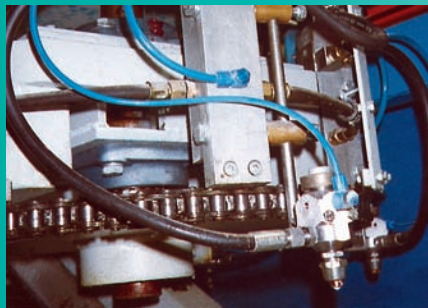
Marking pipes and metal sheets



Laboratory equipment



Seal-coating PCBs



Oval rotor with 24 airless guns for latex-coating the inner parts of skiing jackets



Spraying adhesive media onto cardboard products



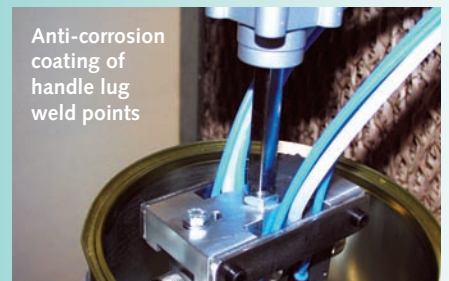
Final cold-end hardening of glass containers



Colouring of flowers



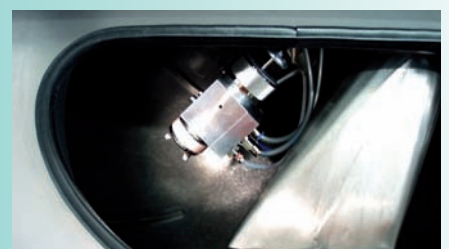
Food processing



Anti-corrosion coating of handle lug weld points



Coating of small parts - edge-defined coating



Drum-coating of small parts

More and more companies are using automatic spraying equipment. The reasons are obvious.



WALTHER PILOT-Laboratory

A great variety of models to meet all requirements

Sectors

- Automotive Industry
- Mechanical Engineering
- Iron and Steel Industry
- Woodworking Industry
- Glassmaking Industry
- Plastics Industry
- Packaging Industry
- Food Processing Industry
- Pharmaceuticals Industry
- Ceramics Industry

Spraying Media

- Paints and Lacquers
- Marking Paints
- Mould Separating Agents
- Adhesives
- Smoothing Media
- Enamels
- Foodstuffs
- Pharmaceutical Products
- Sealing Materials
- Oils and Greases
- Adhesion Promoters

- If you require, we can carry out spray tests in our lab to help you find the ideal solution to your coating problem.
- Whatever the problem, we have the solution, whether it be
 - conventional spraying
 - HVLP- and medium pressure
 - innovative HVLP^{Plus}-technology
 - Airless and air-assisted Airless
- WALTHER PILOT automatic spraying equipment can be added to any existing material feed system, either standard or recirculating
- With WALTHER PILOT-spray guns, servicing and cleaning is made easy. The material duct is straight to prevent deposition of the spraying medium.
- A wide range of nozzle sizes ensures that your spraying medium is put to optimum use.
- To ensure maximum repeat accuracy, WALTHER PILOT automatic guns operate in combination with highly sophisticated control equipment.
- Complete spraying systems, including all the components you require – material feed system, pressure tanks, pumps, air regulators, hoses, spray booths etc. – can be supplied on a made-to-measure basis. All mounting devices are available for every spray gun.
- All automatic spray guns are designed for heavy-duty industrial jobs. For abrasive media, diaphragm versions or guns with low-wear seal packings are available.
- Through constant product development, WALTHER PILOT ensures the highest flexibility in every aspect.

The premium class



The new automatic spray gun from WALTHER PILOT offers top-quality spraying results with a low material consumption. The spray gun model is also designed in such a way that it can be adapted to the most varied production requirements.



Various nozzle extensions and corresponding spray caps are also available for the new PILOT WA 700 series. We are happy to advise you.

Mounting flange for PILOT WA 700



High-Tech Nozzle/Air Cap Systems for PILOT WA 700

A comprehensive range of nozzles ensures excellent results with virtually all types of spraying media.

Available nozzle sizes (Ø in mm):
0.3 · 0.5 · 0.8 · 1.0 · 1.2 · 1.5 · 1.8 · 2.0 · 2.2 · 2.5 · 3.0 · 3.5

Standard size: Ø 1.5 mm

PILOT WA 700

Thanks to the newly developed nozzle/air cap system, HVLPPlus, the PILOT WA 700 automatic spray gun series offers the finest results while at the same time saving material. Depending on the application required, the spray gun is available with internal or external control. Front body and all wetted parts: stainless steel. Material-volume adjustment through notch-type fine adjustment

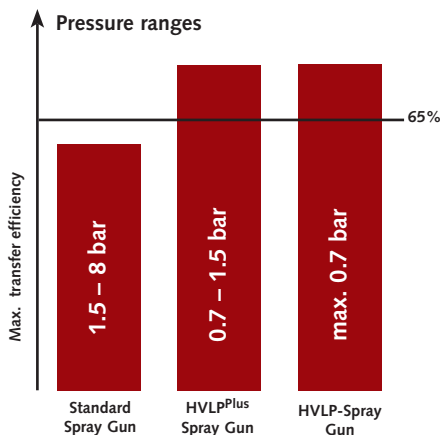
The wide range of versions guarantees optimum product solutions for almost all requirements.

Models

PILOT WA 700:	Standard version with internal control
PILOT WA 705:	Standard version with external control
PILOT WA 710-U:	Standard version with internal control for recirculation systems
PILOT WA 715-U:	Standard version with external control for recirculation systems

PILOT WA 720-ND:	HVLP-Version with internal control
PILOT WA 725-ND:	HVLP-Version with external control
PILOT WA 730-ND-U:	HVLP-Version with internal control for recirculation systems
PILOT WA 735-ND-U:	HVLP-Version with external control for recirculation systems

PILOT WA 740 HVLPPlus:	HVLPPlus-Version with internal control
PILOT WA 745 HVLPPlus:	HVLPPlus-Version with external control
PILOT WA 750 HVLPPlus:	HVLPPlus-Version with internal control for recirculation systems
PILOT WA 755-MD-HVLPPlus-U:	HVLPPlus-Version with external control for recirculation systems



The air caps are colour-coded.



HVLP

HVLPPlus



New: HVLPPlus high-quality atomisation technology

Only WALTHER PILOT can provide the innovative HVLPPlus atomisation technology. The finest finishes are achieved with a high work rate. The high transfer efficiency allows material savings of up to 30%. At the same time, you are protecting the environment.

PILOT WA 800

With quick-change adapter plate

The PILOT WA 800 series offers a large selection of spray guns for almost all job specifications. The guns are all fitted with adapter plates. This allows the spray guns to be quickly exchanged for maintenance purposes.

The front body is made entirely of stainless steel.
Adapter plate: chemically galvanised aluminium.
Stainless steel adapter plates available on request.

Innovative packing solutions enable the service life to be extended by up to 30% compared to similar spray guns on the market.

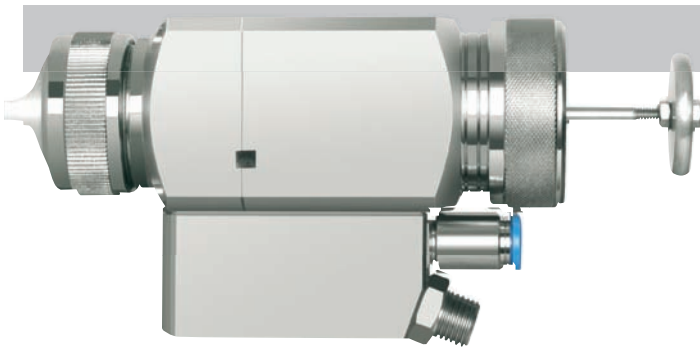
The wide range of versions guarantees optimum product solutions for virtually all requirements.
Versions for spraying adhesives can be found on page 14.

Models

PILOT WA 800:	Standard version with internal control
PILOT WA 805:	Standard version with external control
PILOT WA 810-U:	Standard version with internal control for recirculation systems
PILOT WA 815-U:	Standard version with external control for recirculation systems
PILOT WA 820-ND:	HVLP-Version with internal control
PILOT WA 825-ND:	HVLP-Version with external control
PILOT WA 830-ND-U:	HVLP-Version with internal control for recirculation systems
PILOT WA 835-ND-U:	HVLP-Version with external control for recirculation systems
PILOT WA 840-MD:	Medium pressure version with internal control
PILOT WA 845-MD:	Medium pressure version with external control
PILOT WA 850-MD-U:	Medium pressure version with internal control for recirculation systems
PILOT WA 855-MD-U:	Medium pressure version with external control for recirculation systems



The HVLP and medium-pressure versions of the PILOT WA 800 series enable you to achieve a particularly high transfer efficiency. You save material and protect the environment.



Model version for external control

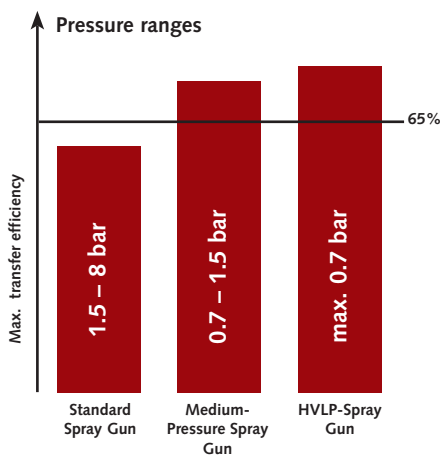


High-Tech Nozzle/Air Cap Systems for PILOT WA 800

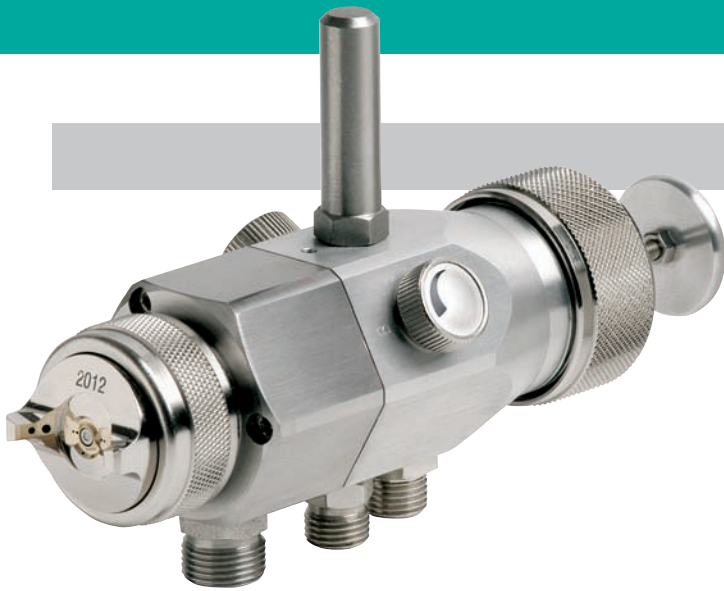
A comprehensive range of nozzles ensures excellent results with virtually all types of spraying media.

Available nozzle sizes (Ø in mm):
0.3 · 0.5 · 0.8 · 1.0 · 1.2 · 1.5 · 1.8 · 2.0 · 2.2 · 2.5

Standard size: Ø 1.5 mm



The all-rounders



PILOT WA 500

Fine surface finishes

The PILOT WA 500 incorporates an internal control feature which automatically turns the atomising air on and off in keeping with the material supply.

This gun is highly recommended for operations where the spraying process is frequently interrupted. It is an ideal means of reducing energy costs.

The front body and all wetted parts are made of stainless steel. Material volume regulation through notch-type fine adjustment.

High-Tech Nozzle / Air Cap Systems for PILOT WA 500 and WA 400

A comprehensive range of nozzles ensures excellent results with virtually all types of spraying media.

Available nozzle sizes (Ø in mm):
0.3 · 0.5 · 0.8 · 1.0 · 1.2 · 1.5 · 1.8 · 2.0 · 2.2 · 2.5

Standard size: Ø 1.5 mm

Models

PILOT WA 500: Standard version
PILOT WA 510-U: Standard version for recirculation systems



PILOT WA 520-ND: HVL version
PILOT WA 530-ND-U: HVL version for recirculation systems



PILOT WA 525-MD: Medium pressure version
PILOT WA 535-MD-U: Medium pressure version for recirculation systems

PILOT WA 515-MA: Model with diaphragm instead of needle packing, for working with special spray media.



PILOT WA 400

Concentrated spraying power

This automatic spray gun operates without internal control, i.e. the atomising air is applied continuously. Model WA 400 is ideal for use in continuous operations or where surfaces are to be air-blasted, for example for drying purposes.

All wetted parts are made of stainless steel, allowing water-based paints and other media to be processed without difficulty.

Models

PILOT WA 400: Standard version
PILOT WA 410-U: Standard version for recirculation systems



PILOT WA 420-ND: HVL version
PILOT WA 430-ND-U: HVL version for recirculation systems



PILOT WA 425-MD: Medium pressure version
PILOT WA 435-MD-U: Medium pressure version for recirculation systems



PILOT WA 450 with adapter plate made of aluminium. The adapter plate allows the gun to be quickly exchanged for maintenance purposes.



PILOT WA 600

Fully automatic compact spray guns

This space-saving model with a length of just 110 mm and weight of only 355 g is ideally suited for a wide range of coating materials. A total of nine nozzle sizes are available in a range between 0.3 mm and 2.2 mm Ø. Round and wide jet are infinitely variable. The self-centering nozzle/air cap system guarantees continuously high-quality spraying finishes.

All wetted parts are made of stainless steel, thus allowing waterborne coatings and aggressive media to be sprayed without problems.

High-Tech Nozzle / Air Cap Systems for PILOT WA 600 and WA 100

A comprehensive range of nozzles ensures excellent results with virtually all types of spraying media.

Available nozzle sizes (Ø in mm):
0.3 · 0.5 · 0.8 · 1.0 · 1.2 · 1.5 · 1.8 · 2.0 · 2.2

Standard size: Ø 1.2 mm

Models

PILOT WA 600:	Standard version
PILOT WA 610-U:	Standard version for recirculation systems



PILOT WA 625-MD:	Medium pressure version
PILOT WA 635-MD-U:	Medium pressure version for recirculation systems



Spray booth with PILOT WA 600 spray guns



PILOT WA 100

Even smaller, even lighter

This miniature-sized spray gun can be used in the tightest of spaces, making it ideal for those special tasks.

The gun body is made of hard-coated aluminium. The nozzle and needle are made of stainless steel. The gun is also available with a stainless steel gun body.



PILOT WA 100 stainless steel model



Models

PILOT WA 100:	Standard version
PILOT WA 100:	Standard version – stainless steel gun body
PILOT WA 100:	Standard version – flushable
PILOT WA 100-MD:	Medium pressure version

The PILOT WA 100 is still available as a version with a round-jet air cap.

The medium-pressure versions of the PILOT WA 600 and PILOT WA 100 series enable you to achieve a particularly high transfer efficiency. You save material and protect the environment.



PILOT WA XV

Proven, rugged and affordable

This highly popular automatic spray gun with internal control is also available in different versions.

It is suitable for all everyday spraying jobs. The front body and all wetted parts are made entirely of stainless steel.

Models

PILOT WA XV:	Standard version (without pullbar)
PILOT WA XV ziehbar:	Standard version (with pullbar)
PILOT WA XV-U:	Standard version for recirculation systems



PILOT WA XV-ND:	HVLP version
PILOT WA XV-ND-U:	HVLP version for recirculation systems

PILOT WA XV	Model with diaphragm instead of needle packing, for working with special spray media, e.g. abrasive media (see below)
--------------------	---

High-Tech Nozzle / Air Cap Systems for PILOT WA XV

A comprehensive range of nozzles ensures excellent results with virtually all types of spraying media.

Nozzle inserts available: (Ø in mm):
0.3 · 0.5 · 0.8 · 1.0 · 1.2 · 1.5 · 1.8 · 2.0 · 2.2 · 2.5 · 3.0 · 3.5 (Standard size: Ø 1.5 mm)

Nozzle sizes for the HVLP version (Ø in mm):
0.3 · 0.5 · 0.8 · 1.0 · 1.2 · 1.3 · 1.5 · 1.8 · 2.0 · 2.2 · 2.5 · 3.0 (standard size: Ø 1.5 mm)

Nozzle sizes PILOT WA XV Membrane (Ø in mm):
0.3 · 1.0 · 1.2 · 2.0



Model version with pullbar



PILOT WA XV-ND (HVLP)

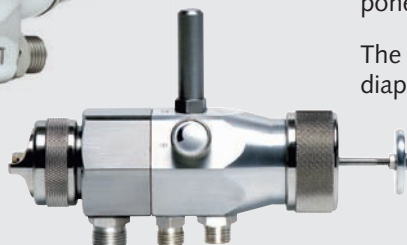
Diaphragm instead of needle seal packing

Automatic spray guns with a diaphragm offer particularly long service lives and are used especially for problematic spraying media, e.g. abrasive and moisture-curing materials. The diaphragm hermetically separates the wetted components from the air components

The spray gun model PILOT Signier is also available as a diaphragm version (see p. 12).

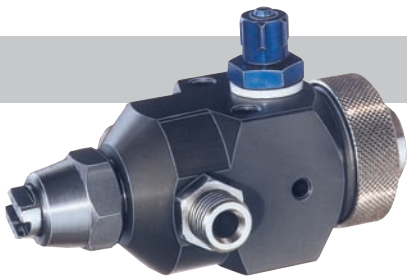


PILOT WA XV Membrane



PILOT WA 515 Membrane

Perfect results under pressure



Standard version (shown with nozzle)

PILOT WA 30

Compact airless spray gun

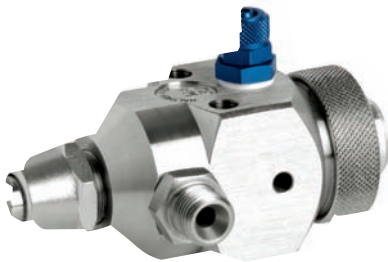
without nozzle.

Max. operating pressure: 350 bar

**All standard airless nozzles are available.
A table of nozzles is available on request.**

The gun is also available with a stainless steel gun body for use with water-based or aggressive media.

PILOT WA 30 is also available as a metering valve with \varnothing 5.0 mm. The maximum operating pressure is 100 bar. A stainless steel valve version is available on request.



PILOT WA 30 – gun body in stainless steel (shown with nozzle)



(shown with nozzle)

PILOT WA 21

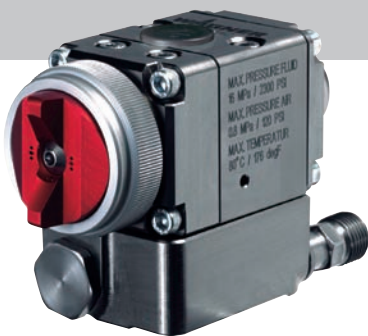
Small airless spray gun

without nozzle.

Max. operating pressure: 120 bar.

Gun body: stainless steel.

**All standard airless nozzles are available.
A table of nozzles is available on request.**



(shown with air cap and nozzle)

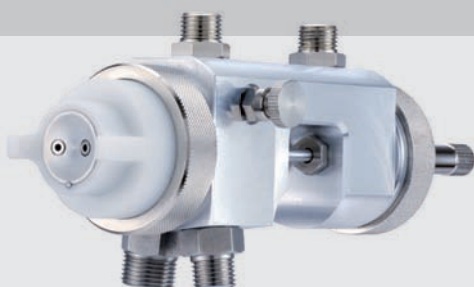
PILOT GA 3000 AC

Wagner AirCoat automatic spray gun

This spray gun is available with either internal or external control. Users can choose between two air caps for use with waterborne or solvent-based materials. For precise installation, the spray gun is firmly mounted on a base plate. A special adapter plate is available for robot mounting.

Max. material pressure: 160 bar, max. air pressure: 8 bar.

A wide range of accessories available e.g. nozzle filters, hose filters, metering valve, cleaning needles for nozzles, high pressure hoses, etc.



PILOT Misch-N-Automatik

Two-component spray gun

This model is used, for example, for mirror silvering.

Intricate spray coating jobs / Marking

PILOT Signier



This spray gun is suitable for a whole host of delicate spraying jobs. An internal control feature opens and closes the atomising air input. Gun body: nickel-plated brass. Nozzle: stainless steel. Air caps: round or wide jet air cap.

Nozzle inserts available: 0.3 · 0.5 · 0.8 · 1.0 · 1.2 · 1.5 mm \varnothing .



PILOT Signier – with flushing agent connection

as PILOT Signier, but with additional connection for flushing agent to clean the nozzle after spraying.

PILOT Signier-Diaphragm

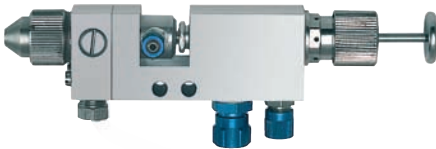


Sturdy, fully automatic spray gun with diaphragm instead of needle-seal packing. Particularly suitable for working with abrasive or moisture-curing media.

Fast cycle rate, air caps: round jet or wide jet air cap.

Nozzle inserts available:
0.3 · 0.5 · 0.8 · 1.0 · 1.2 · 1.5 mm \varnothing

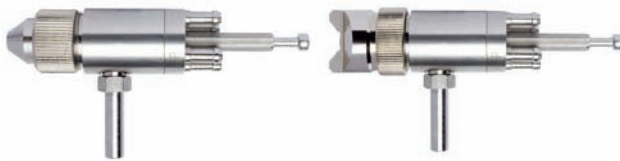
PILOT WA 210-H



Fully automatic spray gun.
Front body and all wetted parts: Hastelloy®
Particularly suited for use with acids and lyes.
Mesamoll lubrication effectively reduces needle packing wear.

Nozzle inserts available:
0.3 · 0.5 · 0.8 · 1.0 · 1.2 · 1.5 mm \varnothing

PILOT WA 50



Miniature spray gun with external control for atomisation parameters. All wetted parts: stainless steel.

With material flow rate control. Round jet or wide jet nozzle insert possible.

Nozzle inserts available:
0.3 · 0.5 · 0.8 · 1.0 · 1.2 · 1.5 mm \varnothing



Round and wide jet air caps for all Signier spray guns

PILOT WA 100

Further versions:
PILOT WA 100 flushable,
PILOT WA 100 with gun body in stainless steel,
PILOT WA 100-MD (material-saving medium-pressure version)



Automatic spray gun for a wide range of applications. Large range of nozzles with only two air cap sizes.

Gun body made of hard-coated aluminium. External control for the atomisation parameters. Round jet or wide jet nozzle insert possible.

Choice of wide/round jet nozzle inserts (\varnothing in mm):
0.3 · 0.5 · 0.8 · 1.0 · 1.2 · 1.5 · 1.8 · 2.0 · 2.2 mm \varnothing

High-precision paint application

Dot and line-marking spray guns can be used for a wide range of applications. The spraying material is frequently paint, but other materials, e.g. adhesives, separating agents, lubricants, sealing compounds or cosmetics are often employed.

For the best results, use WALTHER PILOT material pressure tanks or pumps.

WALTHER PILOT has made a name for itself especially in solving the most demanding tasks. If you have a special coating problem, please contact us. Spraying systems for delicate, high-precision work are generally not available 'off the peg'.



A wide range of applications

- Coating small parts with complex geometries
- Coating with clearly defined edges
- Neck marking for gas bottles
- Application of screw locking marks
- Lubricant application, e.g. for drilling and milling
- Separating agent application for rubber profiles
- End position adhesive application for paper rolls
- Precise application of adhesives (edge gluing, profiles)
- Metering of hardeners and adhesives
- Sealing circuit boards with protective coating
- Encapsulation of PCB components
- Non-contact colour marking for OK/not-OK parts or for marking different versions with a similar appearance.



"Bridge-type" mounting device for marking guns



Coating small parts

Automatic spray guns for adhesive application

PILOT WA 870-K series



Automatic spray gun with quick-change adapter plate for spraying adhesives

These automatic spray guns are fitted with nozzle/air cap systems that are specially designed for spraying adhesives. As all wetted parts are made of stainless steel, the spray gun can be used for spraying all common adhesives. Spray guns with or without internal control are available.

Models

- | | |
|--------------------------|---|
| PILOT WA 870-K: | Standard version for solvent-based adhesives |
| PILOT WA 871-U-K: | Standard version for solvent-based adhesives – material recirculation |



- | | |
|-----------------------------|---|
| PILOT WA 872-ND-K: | HVLP-version for water-based adhesives |
| PILOT WA 873-ND-U-K: | HVLP-version for water-based adhesives – material recirculation |

PILOT WA 470-K series



Also available as a model version with an adapter plate.

These automatic spray guns are fitted with nozzle/air cap systems that are specially designed for spraying adhesives. As all wetted parts are made of stainless steel, the spray gun can be used for spraying all common adhesives. For external control.

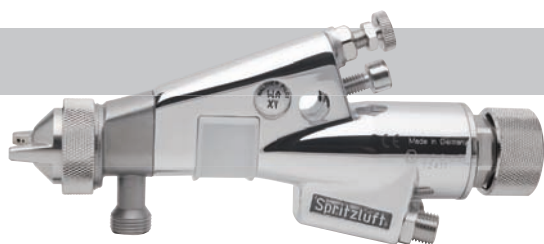
Models

- | | |
|--------------------------|---|
| PILOT WA 470-K: | Standard version for solvent-based adhesives |
| PILOT WA 471-U-K: | Standard version for solvent-based adhesives – material recirculation |



- | | |
|-----------------------------|---|
| PILOT WA 472-ND-K: | HVLP-version for water-based adhesives |
| PILOT WA 473-ND-U-K: | HVLP-version for water-based adhesives – material recirculation |

PILOT WA XV series



Fully automatic spray gun for all common adhesives. All wetted parts are made of stainless steel. For adhesives with a high solid content, special HS (High Solid) or SHS (Super High Solid) air caps are available.

Choice of rotating jet nozzle inserts:
1.0 · 1.5 · 1.8 · 2.0 · 2.5 mm \varnothing
with wide or round jet air cap.
Also available as material recirculation version.



Rotating jet nozzle inserts with wide or round jet air cap for optimum spraying of solvent-based adhesives.

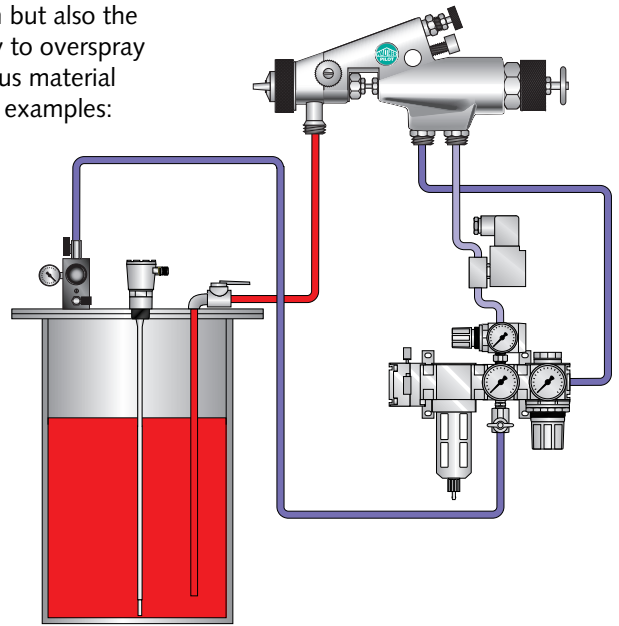
We provide not only the right adhesive spray gun but also the entire peripheral equipment, from material supply to overspray filtration. Depending on your requirements, various material transfer systems are available. Here are just some examples:



Barrel pump for solvent-based adhesives with a compressed air reduction valve. Up to three automatic spray guns can be supplied with material.



MBP 8034 double diaphragm pump for dispersion adhesives mounted on a "chair". The unit is also equipped with a pulsation dampener, a compressed air fitting and a suction hose. Up to 3 automatic spray guns can be supplied with material.



Pressure tank with level sensor, air fitting, solenoid valve and automatic spray gun.



PILOT Signier series

Automatic spray gun for precise, targeted application of adhesives (e.g. edge gluing).
Further information: see page 12.



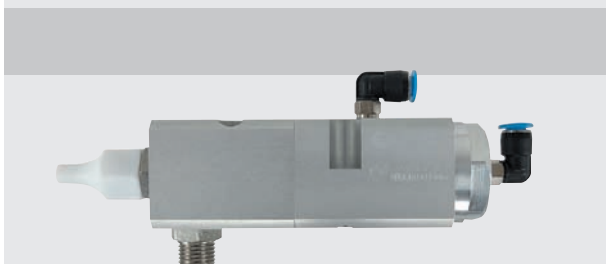
PILOT WA 560-2K

Automatic spray gun for the application of two-component dispersion adhesives. The 'B' component is supplied via the flanged spray gun. Mixing takes place in the spray jet. All wetted parts in stainless steel.



PILOT WA 95

Automatic extrusion spray gun.
Max. material pressure: 50 bar



PILOT WA 96

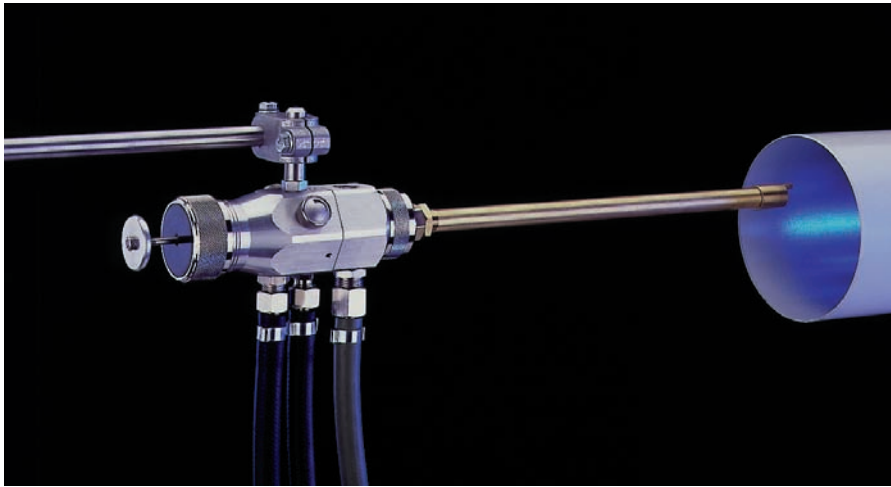
Automatic extrusion spray gun with diaphragm seal. The PILOT WA 96 is particularly suitable for use with moisture-curing, polyurethane-based materials and other critical media.

- Max. material pressure 4 bar with 3/2-way valve
- Max. material pressure 20 bar with 5/2-way valve

Nozzle sizes: 3 mm ø. More nozzle sizes available on request.

Please order our special brochure "Nozzle Extensions".

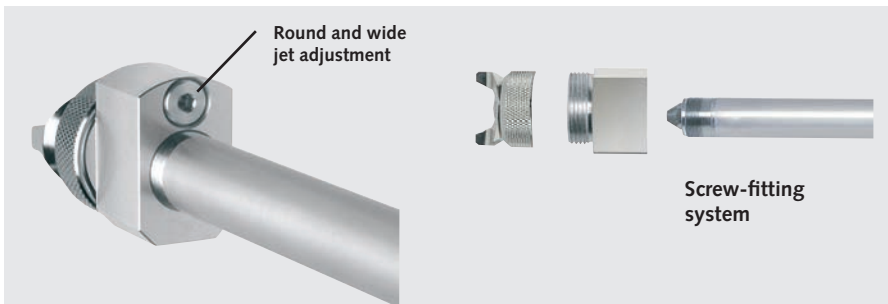
A WALTHER PILOT speciality: coating areas that are difficult to access



Extensions

WALTHER PILOT has developed a wide range of nozzle extensions to facilitate the coating of cavities, pipes, hollow sections, etc. Pipe lengths of up to 3 m can be coated without difficulties. Choose from a wide variety of air caps and nozzle sizes to minimise material consumption.

All common automatic spray guns can be fitted with extensions.



The new generation of nozzle extensions is based on a modular system. All parts can be screwed together. The modular system allows custom-built configurations for different usage requirements. Wetted parts: stainless steel. Standard pipe lengths: 100 - 1000 mm. Other lengths available on request. The modular system reduces the number of replacement parts to be kept in stock and facilitates cleaning and maintenance. The jet width can be infinitely varied via an adjusting screw.

The new range is rounded off by pure round jet air caps without an adjusting screw as well as extensions with internal mixing.



PILOT WA 100 with extension



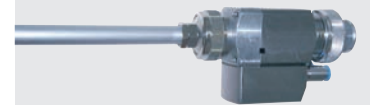
PILOT WA 400 with extension



PILOT WA 500 with extension



PILOT WA 600 with extension



PILOT WA 800 with extension



PILOT WA XV with extension

The pipe crawler

And if our extensions don't go far enough: we offer our "pipe crawler", an automatic spray gun that is drawn through the pipe on a special carriage. A perfect coating is guaranteed.



PILOT WA 80, the "pipe crawler" works with internal mixing.

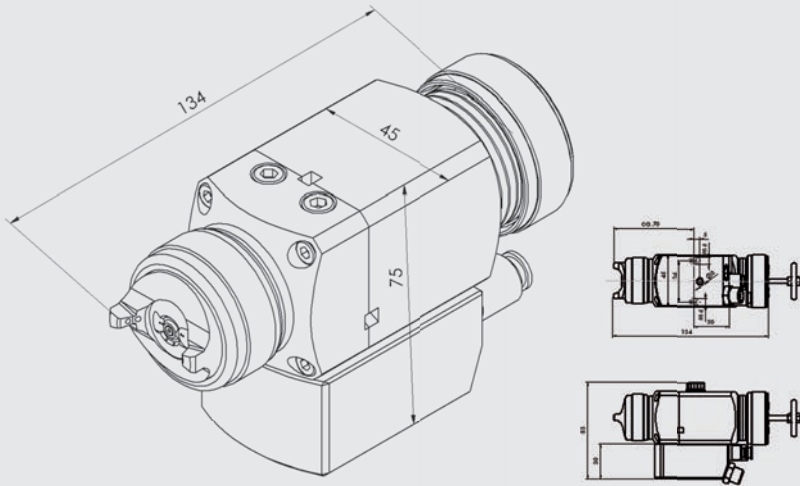


DV-90 internal mixing plate.

This stainless steel air cap is used especially for coating the internal surfaces of pipes and tubes.

Further information on your spray gun

Technical data / dimensional drawings



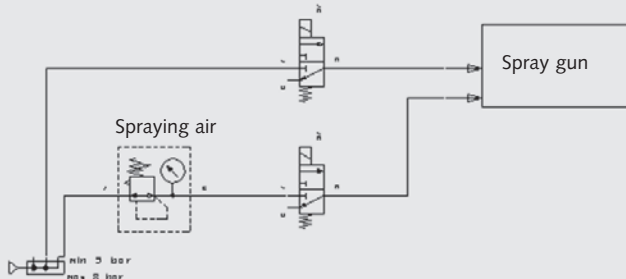
Do you need further information?

We will be happy to send you further documents on special WALTHER PILOT automatic spray guns, with dimensional drawings, technical data and detailed information – also by e-mail.

Internal control

In automatic spray guns with internal control, the spraying air is controlled by an integrated valve. When the spray gun is activated, the spraying air is first switched on and then the

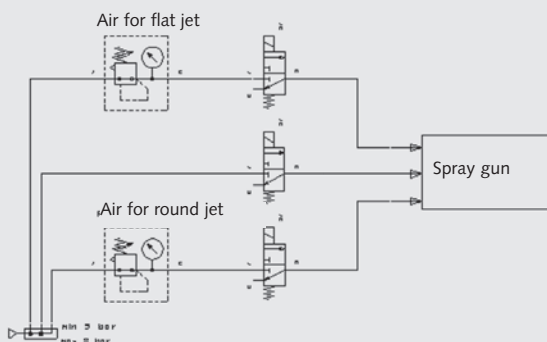
paint supply is opened. Closing takes place in reverse order. The quantity of round-jet and wide-jet spraying air can be adjusted at the gun.



External control

In automatic spray guns for external control, the spraying air is not automatically activated by the control air. The control air is merely used to open the material duct. Round-jet and wide-jet air need to be externally activated and controlled. This allows

easy adaptation of the spray jet geometry to different surface dimensions. It is also possible to use the spraying air to cool the gun after the spraying process or to use the spraying air to air-blast the object.



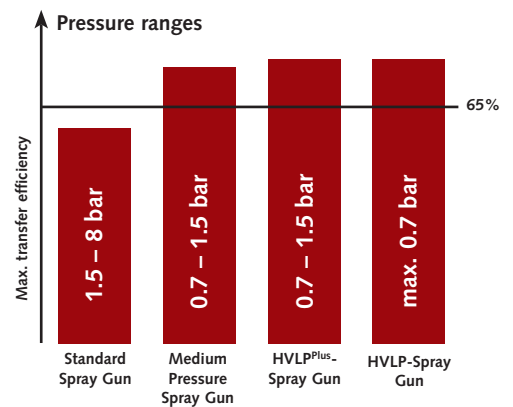
Pressure versions for air-atomising spray guns:

Conventional atomising: Spraying material is atomised at pressures of between 1.5 and 8 bar.

Medium-pressure and HVLP plus: Spraying material is atomised at pressures of between 0.7 and 1.5 bar. HVLP plus achieves especially fine atomisation.

HVLP: Spraying material is atomised at pressures of up to 0.7 bar.

The air input pressure in medium-pressure, HVLPPlus and HVLP is approx. 3.5 bar.



WALTHER PILOT medium-pressure, HVLPPlus and HVLP spray guns guarantee a particularly high transfer efficiency to cut costs and protect the environment.

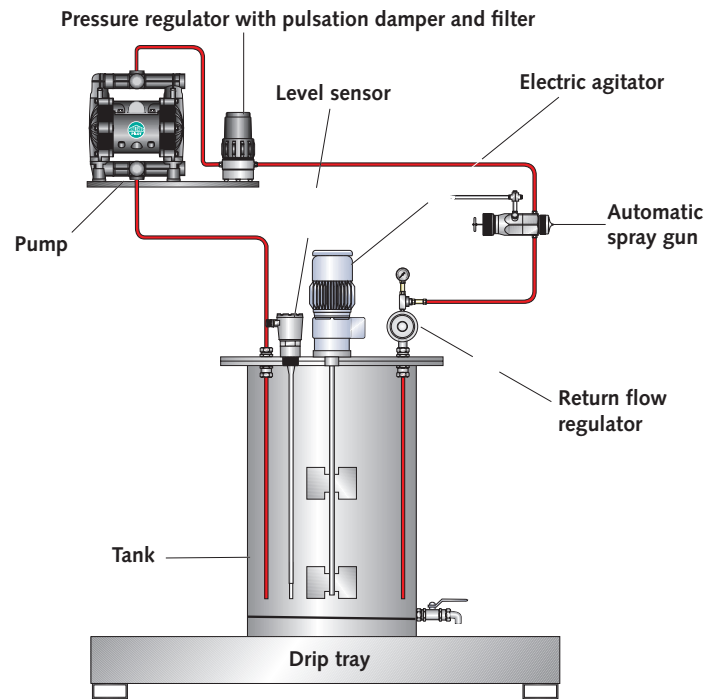
Complete spraying systems: some examples

Material recirculation

The material is pumped from the tank via a ring circuit to the points of application. After the final point of application, the material flows back to the tank via a return flow regulator. As a result, the material is kept in motion and is not able to settle in the pipes.



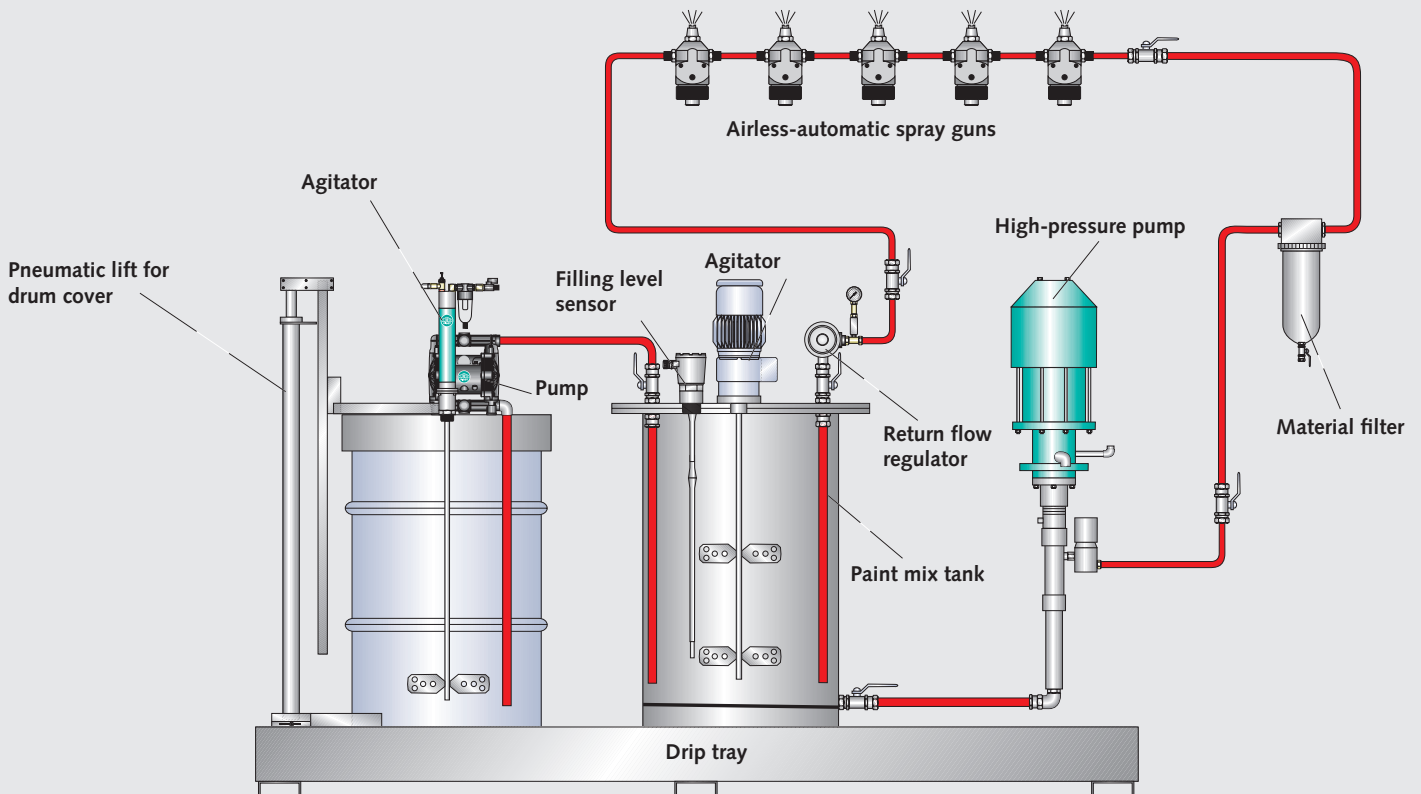
Paint mix tank equipped with pump, agitator and level sensor



Material flow diagram of a high-pressure recirculation system

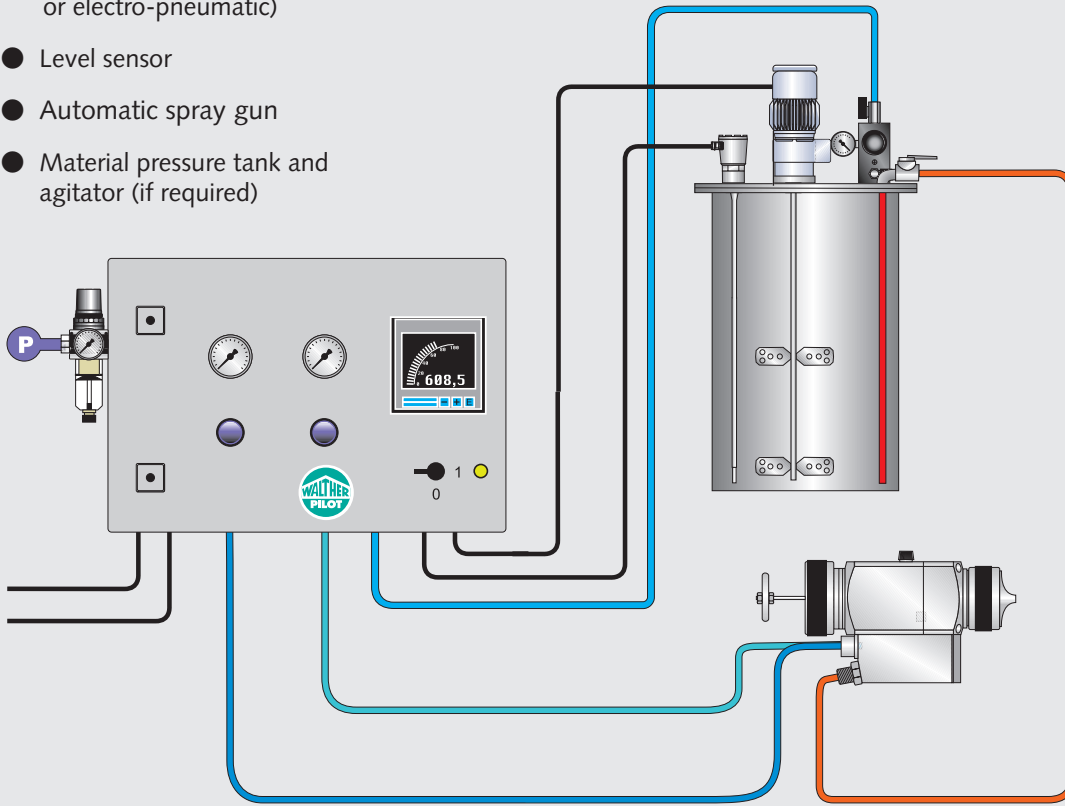
Tank station for high-pressure recirculation operation with a lift for drum covers for 200-litre drums and a WALTHER PILOT paint mixing tank type FMB. Level monitoring with automatic refilling is provided by the pulse generator of the min./max. sensor. The diaphragm pump on the drum cover is activated when the level in the paint mixing tank reaches the minimum.

The filling level sensor also serves as an overflow protection. Drums and mixing tanks must be placed on a drip tray in accordance with water protection legislation. In some cases it is advisable to adjust the material's viscosity and to improve flow properties. We will be pleased to advise you on a system configuration that is tailor-made to suit your requirements.



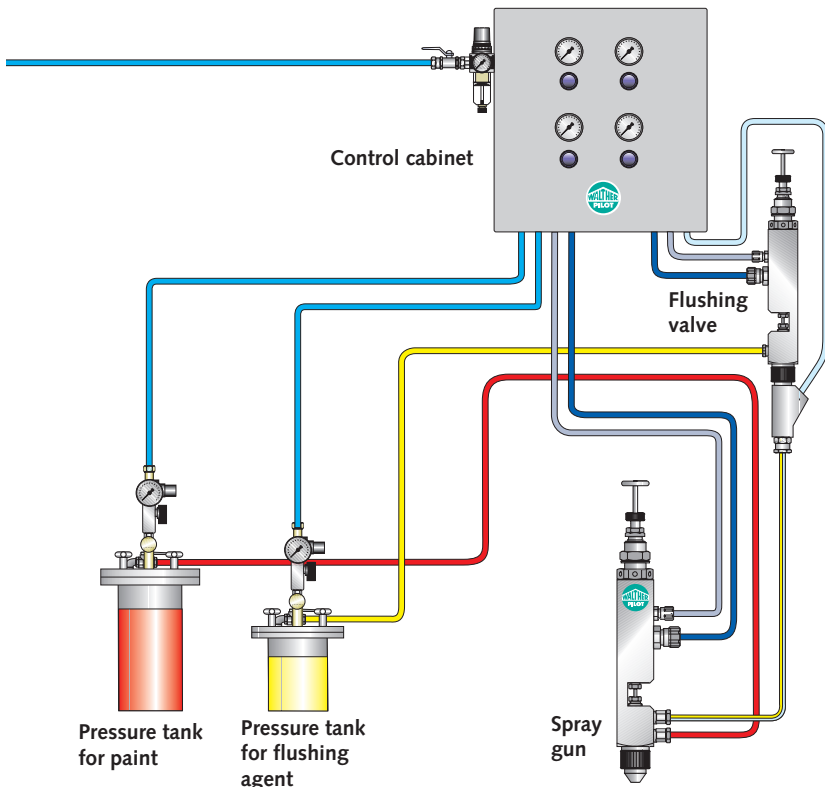
Material flow diagram with a pressure tank and control cabinet

- Control cabinet (pneumatic or electro-pneumatic)
- Level sensor
- Automatic spray gun
- Material pressure tank and agitator (if required)



Pressure tanks in particular are ideally suited for providing pulsation-free material supply. Galvanised and stainless steel versions are available. Air-powered and electric agitators as well as other fittings, e.g. level and temperature sensors, can be mounted on the tank lid if required.

Connection diagram of a spraying system with automatic nozzle and air cap cleaning

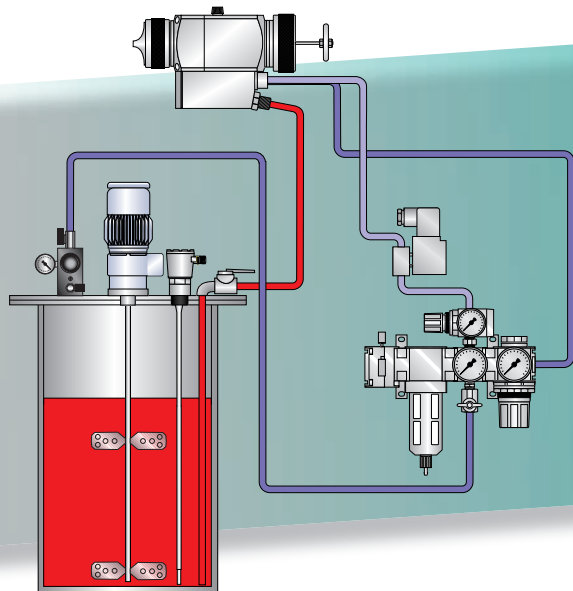


The use of quick-drying media in particular can lead to a build-up of material in the spray gun and therefore to spraying interruptions. The automatic flushing function helps prevent this, by sending a mixture of air and flushing agent through the circular gap between the nozzle and air cap. WALTHER PILOT has developed a special valve for this cleaning process, which mixes air and solvent in a way that guarantees highly efficient cleaning and low consumption simultaneously.

This flushing application ensures a secure and reliable process and the greatest possible repeat accuracy when marking.

Pressure tanks are the optimum solution for supplying flushing agent to the flushing valve and from there to the automatic spray gun.

WALTHER PILOT



Design your automatic spraying system together with us. The WALTHER PILOT product range includes all the components you need.

Cut costs without compromising on quality.

The WALTHER PILOT Product Range



Spray coating technology

Manual spray guns
Automatic spray guns
Airless-equipment

Compressed air supply

Control cabinets
Air filters and air pressure regulators
Air hoses and fittings

Material transfer technology

Material pressure tanks
Paint mixing tanks
Agitators
Filling level sensors
Pumping systems

Two-components mixing installations

Mechanical installations
Electronically controlled installations

Spray booths

Automotive combo booths
Industrial spray booths with paint arrestors
Water wash booths
Drying systems
Air make up units

Protective equipment

Masks
Protective clothing



The Coatings Expert

WALTHER Spritz- und Lackiersysteme GmbH

Kärntner Str. 18-30 · D-42327 Wuppertal
Phone 0049-202 / 787-0 · Fax -217 · info@walther-pilot.de

www.walther-pilot.de

